

Version: March 22, 2018
Please check back for revisions. Changes will be noted on the last page



***Massachusetts Speech and Debate League
State Debate Championship Tournament
Saturday, March 24, 2018***

The Board of Directors of the Massachusetts Speech and Debate League is pleased to announce the State Debate Championship Tournament. The tournament will be hosted on March 24th at Chelmsford High School. The tournament will offer the following divisions:

Policy: Two divisions – Varsity and Novice. Both Policy divisions are “open evidence”.

Lincoln Douglas (LD): Two divisions – Varsity and Novice.

Public Forum (PF): Two divisions – Varsity and Novice

Only MSDL member schools are invited to compete, and debaters may enter in one tournament division. Schools from adjoining states are welcome to join the MSDL and participate at the MSDL State Debate Tournament if they have no state championship tournament of their own. Middle school students are invited to participate in this tournament, subject to bid requirements (below) and Section 1.2 of the MSDL Rules and Regulations.

As explained below, participation is further governed by (1) bid qualification requirements, (2) wildcard rules, and (3) novice status rules.

Bid Qualification Requirements

A Policy team may participate in the state debate championship without having satisfied any bid qualification requirement. PF and LD teams may participate in this tournament if they earn a bid (i.e., an invitation).

- An entry can earn a bid earning a winning preliminary record at any MSDL sanctioned tournament, or by having at least as many wins as the 8th-place entrant in their division.
- Bid qualifications for the open PF division and for the varsity LD division must be earned in varsity or open divisions. Accomplishments in a junior varsity or novice division can only be used to earn bids in a novice division at the state championship tournament. Novice debaters can also use Varsity bids to qualify in novice divisions.

Note that a PF bid must be earned as a team. That is, two debaters entering as a team at the state championship can earn a bid for their joint entry only as a result of their having debated together at a previous tournament.

When registering online, please indicate the tournament where each LD or PF entry earned a state championship bid. In the “Finish/Points” field, enter the entry’s preliminary round record at that tournament.

Bid information for each MSDL tournament is available [here](#). Be sure to review the README file at the same location.

Wildcard Rules

An entry that does not earn a bid to the state debate championship may still participate as a “wildcard”. Wildcard entries are subject to the following limitations:

Version: March 22, 2018

Please check back for revisions. Changes will be noted on the last page

1. “New” schools may each send a total of four wildcard entries across both the LD and PF divisions. A new school is one that has not competed in Policy, LD, or PF debate in the MSDL during the previous four years.
2. Other schools may each send a total of two wildcard entries across both the LD and PF divisions.

When registering online, please indicate if an entry is being submitted using a wildcard bid.

Novice Status

The novice divisions at the state championship tournament are open only to novice entrants. Students who have competed in previous years in speech events, but not debate events, are considered novices. A novice debater who has qualified to compete in the varsity division for an event can but does not have to compete in the novice division of that event. In the Policy division, students who have not debated in an open-evidence division prior to the current academic year may register as novices.

Be sure that the novice / varsity status of each of your debaters is correctly specified in Tabroom. To check their status, click on your email address in the upper right corner of the Tabroom screen. Then click on the “Competitors” tab. Varsity / Novice status appears in the second column from the right.

Judges

Schools must provide 1 judge for every:

- 2 Policy Debate entries,
- 2 entries in LD, and
- 2 entries in PF.

Please note the following additional requirements:

1. These are separate judge pools, so each judge that you bring can fulfill only the requirement for one division. For example, if your school enters one policy team and one PF team, you need a judge for the Policy pool and a second judge for the PF pool.
2. Novice division judges may be varsity students who are in either their junior or senior year of high school. High school students who are judging may not compete at the state championship tournament.
3. Judges in the varsity divisions and in the open PF division must be adults and not current high school students. You must have enough adult judges to cover the ratios specified above for debaters entered in either the varsity divisions or in the open PF division.
4. All judges must be former debaters or have judged in at least one prior debate tournament.
5. Please be sure all judges are familiar with basic round formats (speech order, speech times, prep time). We will not have time to review those points in the judge briefing. Refer newer Public Forum judges to the online manual ([here](#)).
6. The tournament may use electronic balloting. All judges must have accounts on Tabroom.com. For more information on setting up accounts, see [here](#).

NOTE: The number of varsity-division judges a school brings for each format must be at least one-half the number of varsity teams the school enters in that division. For example, if a school enters 3 varsity PF teams and 3 novice teams, it will owe a total of 3 judges (6 teams total and a 2:1 team-to-judge ratio). Because it has 3 varsity teams, and one-half of 3 is 1.5, at least 2 of its 3 judges must be qualified to judge varsity.

Judge obligation.

Judges are obligated through the first break round of any division in which their school has an entry. Judges from schools with teams that break are obligated through the **final round** in that division.

Missing judges and judges who leave early seriously compromise the smooth operation of the tournament. If you have a judge who must leave before the end of the day, you must provide a qualified replacement, or incur a \$50 missing judge penalty.

We cannot provide hired judges directly to schools for this tournament. If you do not have sufficient judges, we may have to reduce your entry numbers to be in line with your numbers of judges. However, we will again attempt to hire outside neutral judges to make the judging pool more experienced and easier to manage. If you know of any experienced neutral judges who may be interested, please direct them to Joshua Cohen at jcohen1964@gmail.com.

Entering judges into Tabroom

First – remember that all judges must have accounts on Tabroom.com to be registered. Documentation to create an account can be found [here](#).

Second, you will be asked for additional information about each judge, as illustrated in the screen grab below:

The screenshot shows a form titled "ADDITIONAL DETAILS NEEDED" for a judge. At the top, there is a text area for "Judge Notes" with a red warning: "Please delete if no longer relevant". To the right of the notes is a text input field containing "Cannot judge Newton South team Lee/Chang". Below this is a section titled "Judge pools" with the instruction "Each judge must be put in a minimum of 1 pools". There are two rows: "PF Varsity" for "Chelmsford High School" with a checked checkbox, and "PF Novice" for "Chelmsford High School" with an unchecked checkbox. Below that is a section titled "Other Info" with a checkbox for "ADA/Accessible Rooms Needed" which is unchecked. At the bottom right of the form is a blue "Save Details" button.

- **JUDGE NOTES** – Enter anything here that you want the tab room personnel to know about this judge. For example, you can indicate that a judge should not adjudicate rounds involving a team from another school (e.g., because they know one of the students on that team outside of debate). Be sure to erase information from past tournaments that is not pertinent to the State Championship tournament. This field will likely be blank for most of your judges.
- **JUDGE POOL (NOVICE OR VARSITY)** – Each debate format offered at this tournament (CX, LD, PF) has both a Varsity division and a Novice division. When you enter your judges into Tabroom for one of these formats, you will be prompted to specify which of two pools that judge should be assigned to. Using the check boxes, you can specify Varsity, Novice, or both. In the example below, the PF debate judge is designated for the Varsity division only.
- **OTHER INFO (ADA/ACCESSIBLE ROOM NEEDED)** – Check this box if a judge needs to be placed in only those rooms that are ADA/Accessible.

Be sure to click on SAVE DETAILS when you are done entering information for this judge.

Version: March 22, 2018

Please check back for revisions. Changes will be noted on the last page

Topics

LD will use the NFL March/April topics. PF will use the March topic. Policy will use the 2017-2018 national topic. The resolutions appear below:

Policy Debate – Resolved: The United States federal government should substantially increase its funding and/or regulation of elementary and/or secondary education in the United States.

LD – Resolved: The United States ought to provide a universal basic income.

PF – Resolved: On balance, the current Authorization for Use of Military Force gives too much power to the president.

Fees

The cost is \$10 per student. Hence, fees are \$20 per Policy team or PF team, and \$10 per LD debater. **Please make checks payable to Massachusetts Speech and Debate League.**

Note – Payment must be by check and each school must provide a single check covering all registration fees. Personal checks and checks issued by your school are acceptable.

Registration Instructions

Team registration	Due Tuesday, March 20 at 5:00 PM	Enter on Tabroom.com (http://www.tabroom.com)
Judge registration	Due Wednesday, March 21 at 5:00 PM	Enter on Tabroom.com
Team changes	Due Tuesday, March 20 at 5:00 PM	Enter on Tabroom.com
Team drops	Due by Thursday, March 22 at noon	Before March 22 at 5:00 PM, make drops at Tabroom.com. After that time, email jcohen1964@gmail.com

All schools entering the MSDL State Championship Tournament must have paid their MSDL dues before competing.

Registration Confirmation

As we cannot be sure we have cellular reception at the tournament site, **registration confirmation is in person from 7:45 to 8:15 AM.** If you run into unusual problems, you can try to text 617-606-2264. Please remember to include the name of your school in your text message. Please leave adequate time for unanticipated delays. Teams that are late may face forfeiture of their first round.

Approximate Schedule

- **7:45 to 8:20 – Onsite registration**
- 9:00 – Round 1. Times for subsequent rounds will depend on the size of the field and the available resources.
- The tournament will break to appropriate elimination rounds that will be determined on the basis of field size and scheduling considerations.
- Awards are tentatively scheduled for 7:00 PM.

Version: March 22, 2018

Please check back for revisions. Changes will be noted on the last page

Sweepstakes

A school's sweepstakes score will be calculated based on the top two scores earned by its entries in each division, with novice and varsity divisions counting separately.

An entry's score is the number of wins it earns from both preliminary and elimination rounds, including byes and coach-overs. Wins in Policy debate will be scaled up by a factor of 1.5.

Computer Use

- Do not assume that you will be able to use the internet at Chelmsford HS.
- Do not assume that you will be able to access an electrical outlet during debate rounds.

Conduct and Care of Host School

Judges and Debaters – Please remember that we are guests at Chelmsford High School. Finding a school to host the debate championship tournament is challenging, so please respect the building. Other than rearranging student desks for the round, please leave each room exactly as you found it.

Room rules

- NO students may enter any room before the judge arrives.
- Judges and debaters may not use the teacher's desk, chair, or touch anything on a teacher's desk. Tournament participants may not use any classroom supplies (paper, pens, etc.).
- Judges and debaters may not touch any items on desks, tables, or other surfaces.
- Judges and debaters may not use, move, or unplug any electronic device – even temporarily. Only outlets with nothing plugged in may be used.
- Judges and contestants may not erase or write anything on any whiteboard. Do not write on Smart Boards since doing so can cause costly damage.

Enforcement

Members of the Chelmsford High School community will be checking on and photographing rooms before and after rounds.

Any violation of these rules can result in a forfeit. Repeated violations can result in a team's disqualification from the tournament and possible disqualification of that team's school.

Standard rules of professionalism, etiquette, and respect for our hosts and their school shall apply at all times.

We look forward to seeing you at the tournament!

Sincerely,

The MSDL Board

Version: March 22, 2018

Please check back for revisions. Changes will be noted on the last page

Driving Directions

Chelmsford High School
200 Richardson Rd
North Chelmsford, MA 01863

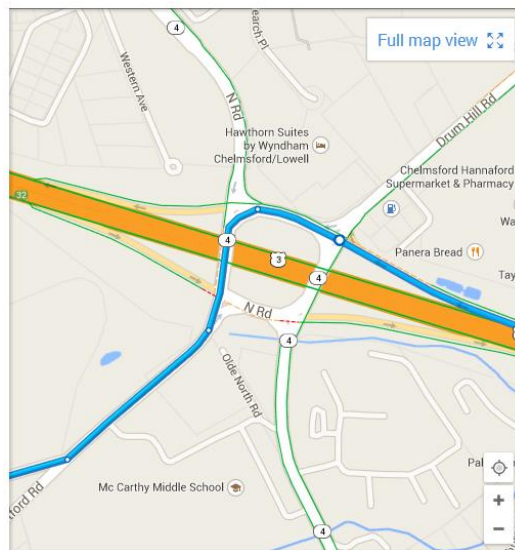
From Rte. 3 North, take Exit 32 onto Drum Hill Rotary. As you reach the end of the exit ramp (at the right edge in the figure below), you will cross over Drum Hill Road. By the second traffic set of lights move to the left center lane. Once through the second set of lights (now on Old Westford Road), move into the right lane. You will be crossing over Route 3. Stay to the right, and continue straight on Old Westford Road.

After you proceed about 100 yards down Old Westford Road, the road splits. Take the right hand fork (softball field is on your right). This is Graniteville Road.

Take the first entrance to the high school (see second figure, below). The “DO NOT ENTER signs can be ignored – they are for school days only). Proceed straight down the hill.

Students should be dropped off at the front of the school (see “1. Student drop off” in figure below).

NOTE – If you are using GPS, you may be directed to the school entrance at the rear of the building (labeled “200 Richardson Road in the Figure below). Or you might be directed to the second school lot entrance that is further down Graniteville Rd. Please instead follow the arrows in the diagram below.



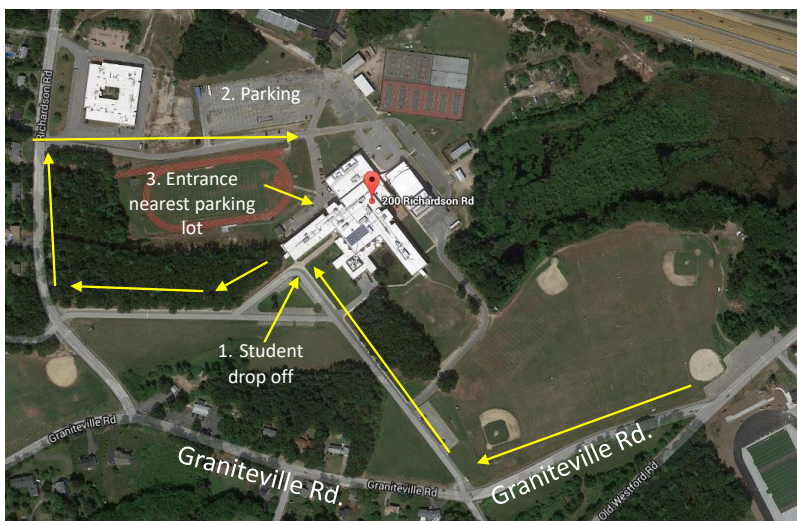
PARKING

Parking is limited in the front of the school. Therefore cars, vans and buses should park around the side of the building. After dropping off students, as described above, continue out the opposite school access road towards Richardson Road.

Turn right on Richardson Road and proceed no more than about one tenth of a mile.

Then turn right again onto Jack Peters Way. Harrington Elementary School will be on the left. As you proceed on Jack Peters Way, the high school will appear on your right. **Take a left into the parking lot (“2. Parking” in the figure to right).** Walk back towards the high school. The running track will be on your right. The gym will be on your left. Go past the large generator.

Enter via the side entrance. Proceed to the double doors (“3. Entrance” in the figure to right). Enter the double doors and then proceed UP ONE FLIGHT of stairs. (DO NOT STAY ON THE FIRST FLOOR). Turn right after the landing, and then left. This will take you to the cafeteria.



Do NOT park, nor enter the building from the Performing Arts Center, or by the Gym entrance. Those door will be locked.

Version: March 22, 2018

Please check back for revisions. Changes will be noted on the last page

LIST OF REVISIONS since February 25

Date	Page(s)	Revision
3/3	2	Added: " <u>NOTE</u> : The number of varsity-division judges a school brings for each format must be at least one-half the number of varsity teams the school enters in that division. For example, if a school enters 3 varsity PF teams and 3 novice teams, it will owe a total of 3 judges (6 teams total and a 2:1 team-to-judge ratio). Because it has 3 varsity teams, and one-half of 3 is 1.5, at least 2 of its 3 judges must be qualified to judge varsity."
3/10	4	Added to section on registration fees: "Note – Payment must be by check and each school must provide a single check covering all registration fees. Personal checks and checks issued by your school are acceptable."
3/10	5	Computer Use <ul style="list-style-type: none">• Do not assume that you will be able to use the internet at Chelmsford HS.• Do not assume that you will be able to access an electrical outlet during debate rounds.
3/11	4	Tournament signup deadline dates corrected.
3/22	6	Clarifications made to Directions and Parking.